


**BIG – BEST IN GLOBE TRADING &
CONTRACTING WLL**

CONTROLS, TELECOM & ELV PRESENTATION

A scenic view of a city skyline across a body of water, with palm trees in the foreground. The image shows a clear blue sky, a turquoise sea, and a dense cluster of skyscrapers in the distance. In the foreground, there are several tall palm trees and a green lawn. A small boat is visible on the water to the right.

BIG Trading & contracting is a Solution provider and System Integrator operating in Qatar and Saudi Arabia and providing the complete end to end Telecommunication and ELV solution in the field of

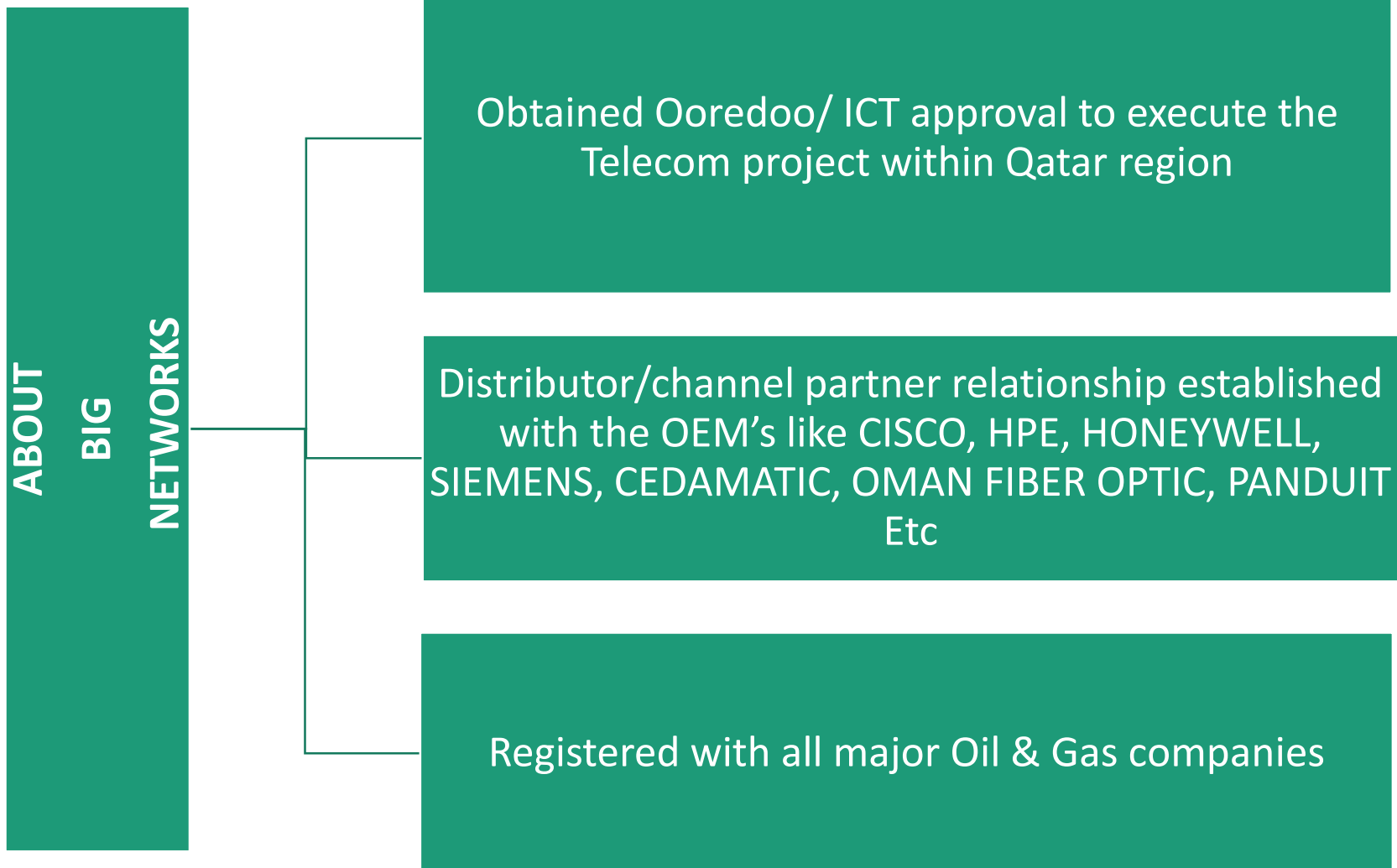
- ❖ Healthcare Industries
- ❖ Education
- ❖ Hotel Industries
- ❖ Oil & Gas Industries
- ❖ Energy & Power Utilities
- ❖ Aviation & Transportation
- ❖ EPIC Projects and Upgrade Projects

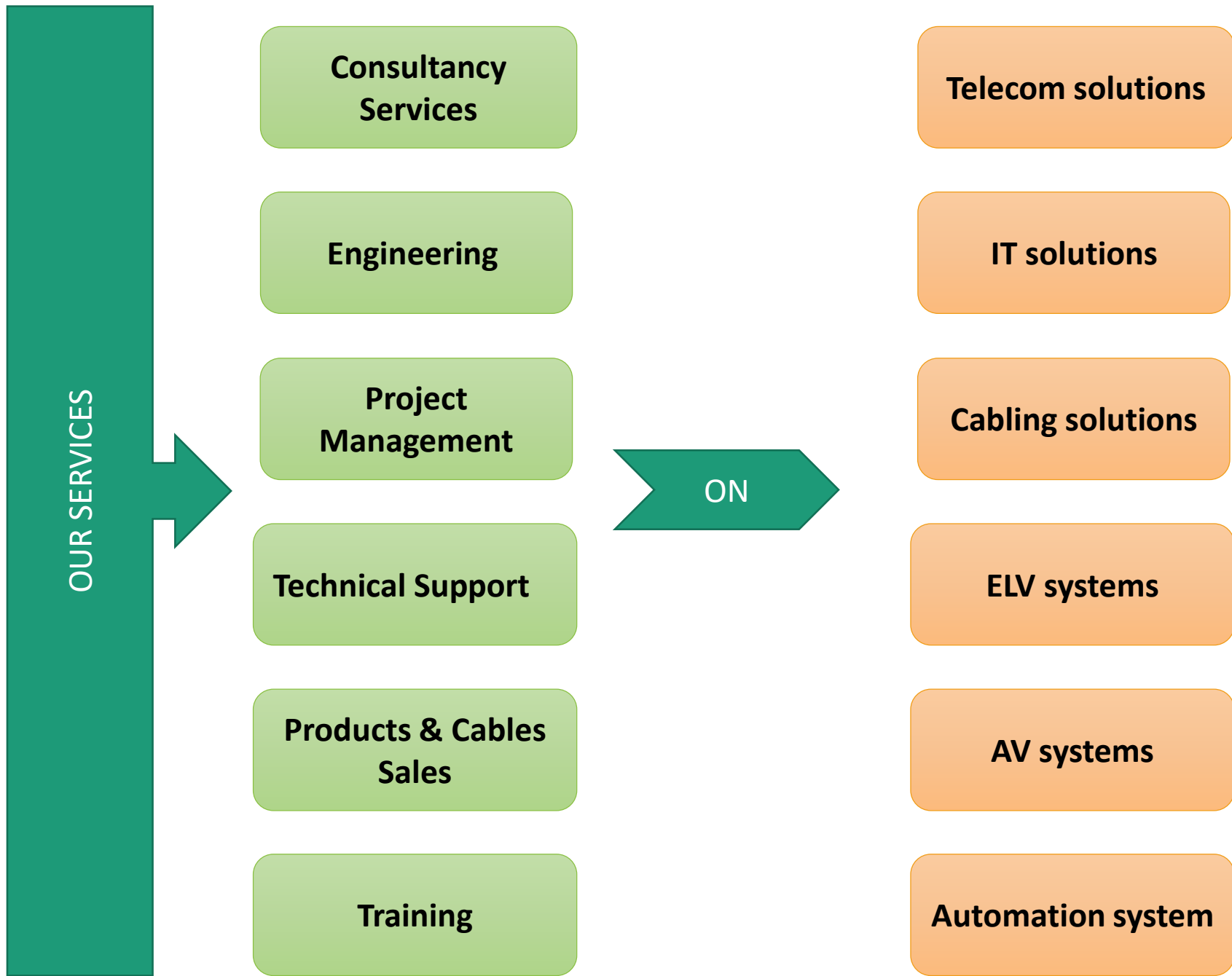
WHO ARE WE

BIG - BEST IN GLOBE TRADING & CONTRACTING W.L.L
is operating in Qatar for **last 10 years**. One of the
leading **System integrators in Qatar for Telecom, IT,
ELV, Security, Automation Systems**

Major Established Clients are Qatar Energy, Manatec,
QG, Qatar Steel, QAFAC and Infrastructure sectors.
Fast growing client base and reputation for quality
and deliverance

ISO 9001: 2015 and ISO 45001: 2018 Certified
Company





PRODUCT & SERVICES

► Oil & Gas Services

- HV & LV Cable Laying, Glanding Services
- Panel Assembly and Constructions
- F&G Panel Assembly Installations
- CEMS & ANALYSER Panel Assembly and Preparations
- Leak Detection System and Services
- PLC & SCADA Integrations Services
- Cathodic Protection Services
- RTU Panel Installations
- OTN and Industrial Automations
- Telecom Multiplexer Installations
- UHF/ VHF Radio
- ELV System Installations (CCTV, ACS, and other ELV Systems)



The background of the slide is a complex network diagram. It features a dense web of thin grey lines connecting various nodes. The nodes are represented by circles of different sizes and colors, including dark blue, light blue, and grey. Some nodes are larger and more prominent, while others are smaller and less noticeable. The overall effect is a sense of interconnectedness and data flow.

Honeywell

BIG – TELECOM SOLUTIONS

TELECOM SUPPLY AND SOLUTIONS

- ✓ Transport Equipment – Optics, SDH,PDH, IPMPLS-TP (TDM) & Packet Solutions.
- ✓ IP MPLS (Cisco / Nokia / Juniper)
- ✓ Microwave, BTS & RF Services
- ✓ Motorola Radio Supply & Services
- ✓ O&M Services
- ✓ Network Design
- ✓ Network planning and Engineering support
- ✓ Technical Documentation
- ✓ TSP Services
- ✓ NOC Services
- ✓ End to End Project Management

Avara Technologies

DYNAFLEX MULTISERVICE

- DB4 Multiplexer
- DXC Cross connect
- Interface Cards
- SDH Transport
- Gbe Transport
- Optical Transport
- Ethernet Switch

ETHERNET ACCESS

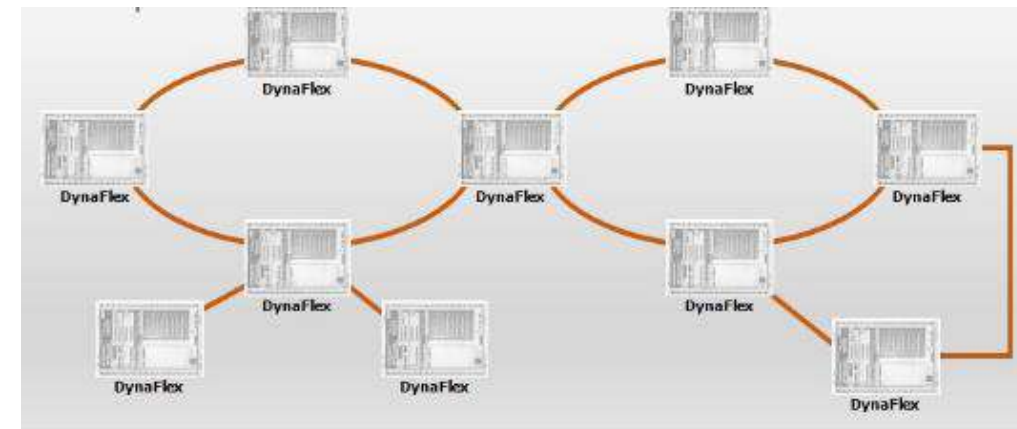
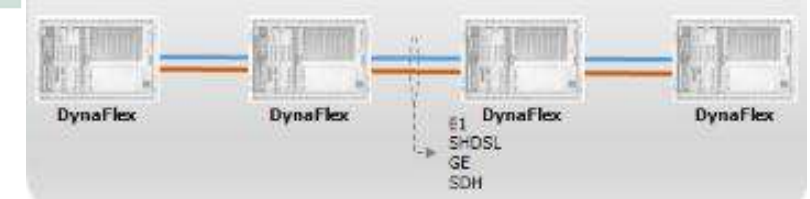
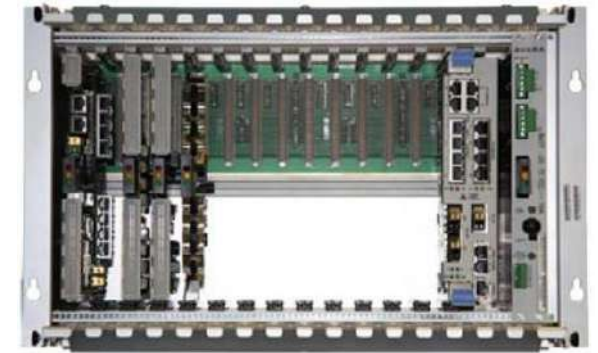
- Ethernet Over TDM
- Ethernet Over Fiber
- TDM Over Ethernet

VOICE & SERIAL PRODUCTS

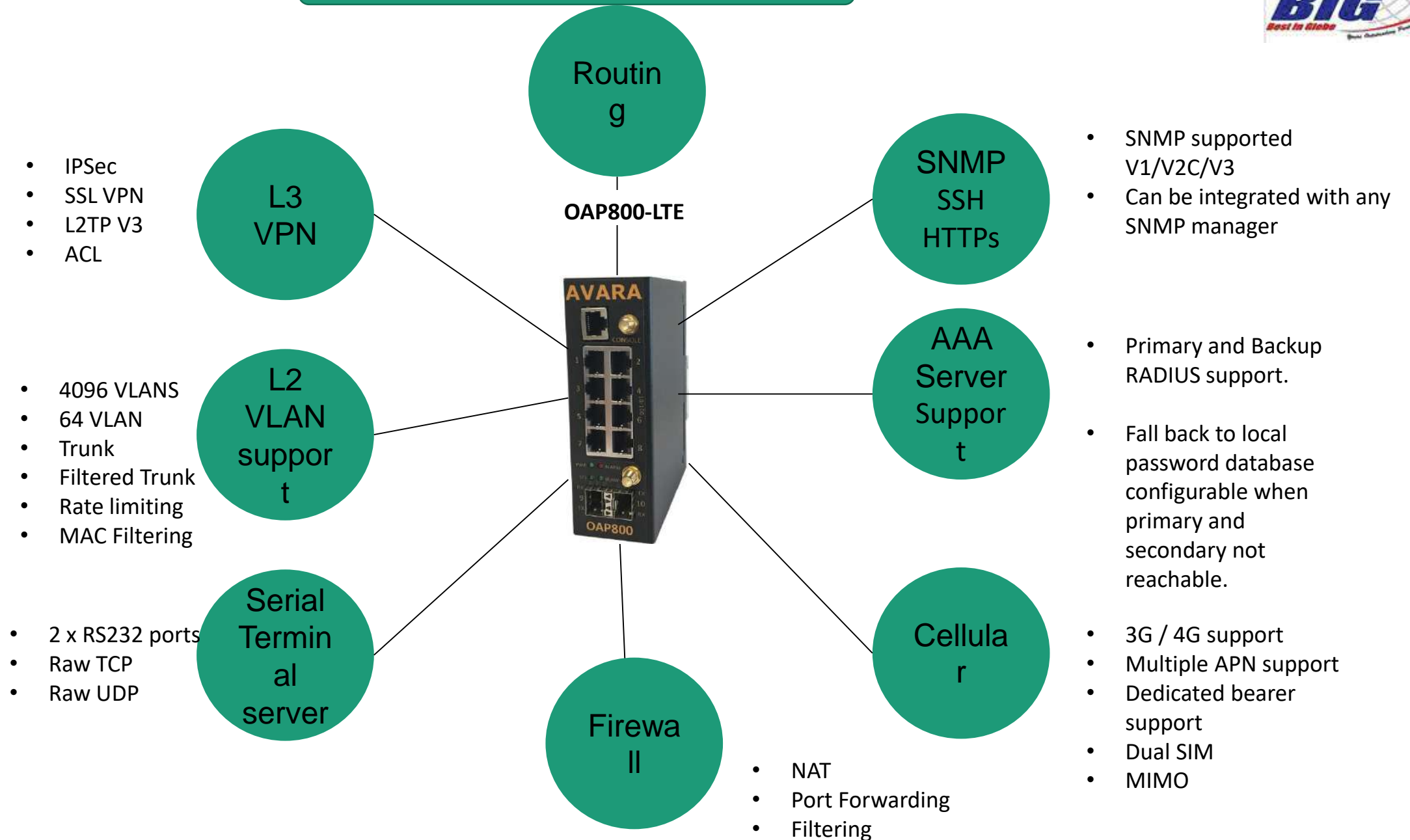
- Optical Access Point
- Point to Point
- Ring Network

Together with the extensive Ethernet switching functionality supported, the DB4 is an ideal solution for mission critical networks where deterministic timing, low jitter and predictable switching times are necessary.

DynaFlex Multiplexer



AVARA SOLUTIONS – OAP 800



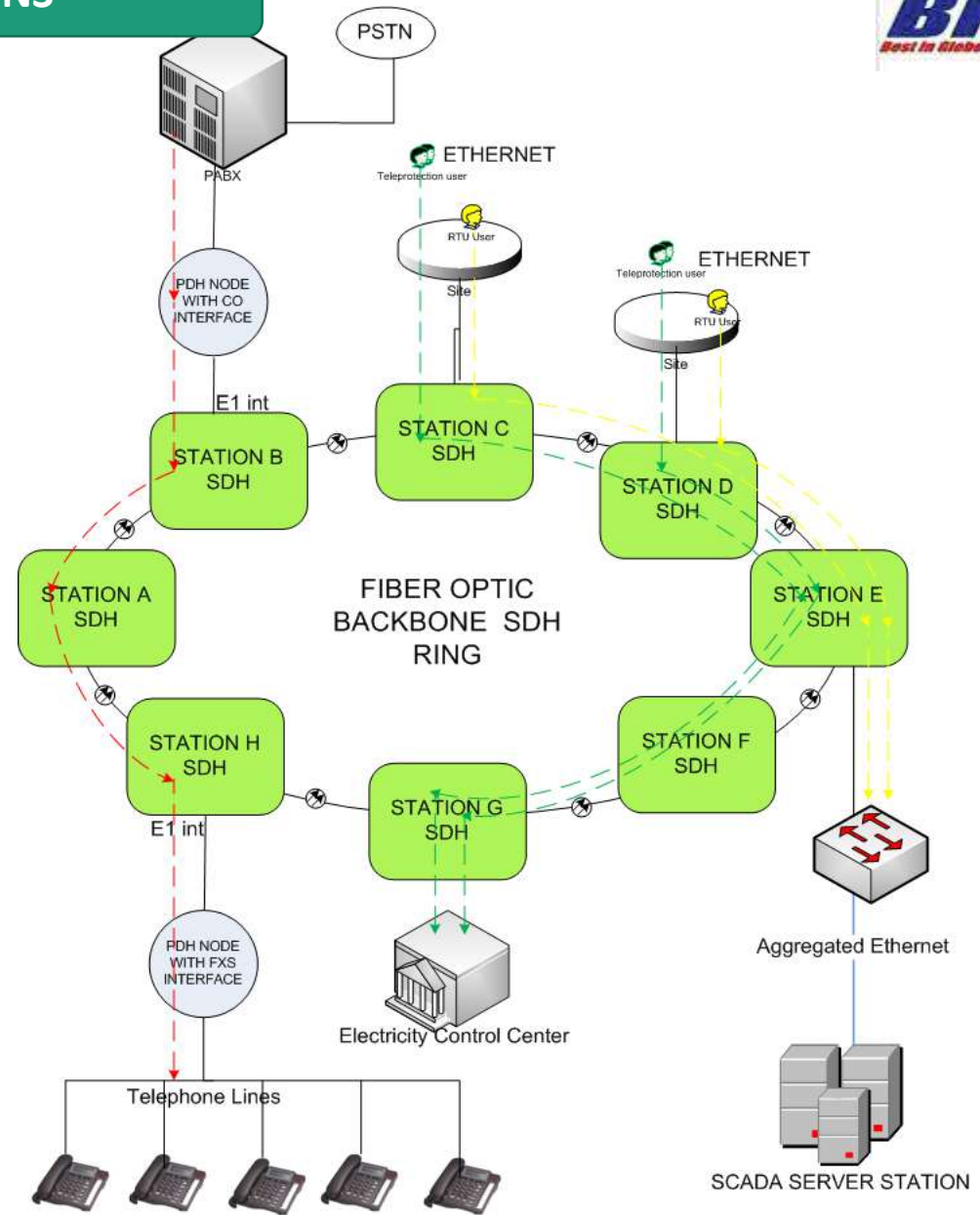
TELECOM SOLUTIONS



In Big Security Networks, we develop secure efficient and effective Telecom solution to fit all industries.

Being valid partner with Avara's systems, BIG Telecom solutions with DynaFlex product family is a flexible, fully featured, multiservice node with powerful cross connect & protection capabilities, interoperable and compatible with the Nokia Dynanet & Siemens' FMX-2 products.

With the support for a wide range of interfaces like POTS, SCADA, Ethernet, Serial Data and Tele-Protection, the DynaFlex platform is an ideal choice for providing mission critical TDM services over PDH, SDH or Ethernet based packet switched networks



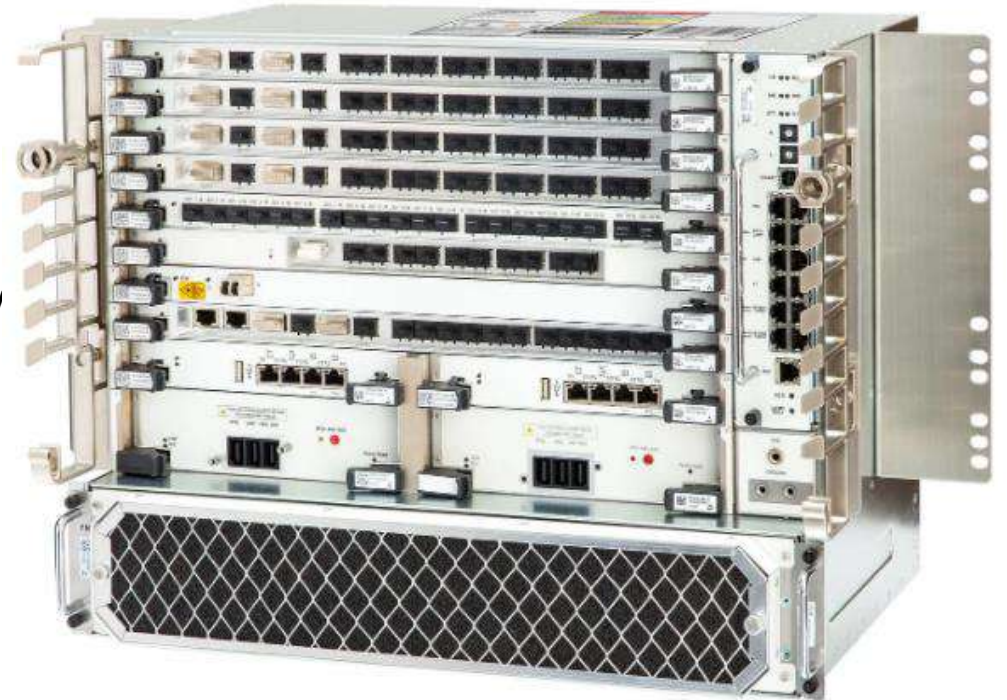
Industrial SDH/PDH Communications

Nokia DWDM Equipment

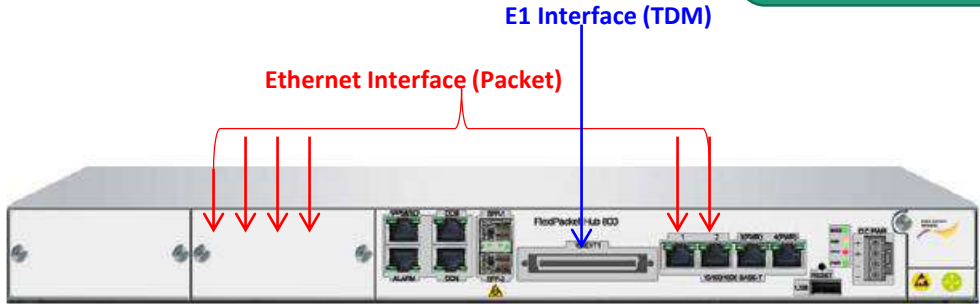
Support next-generation DWDM multiservice, multilayer P-OTN transport with the Nokia 1830 Photonic Service Switch (PSS)

The 1830 PSS portfolio helps you optimize optical networks to meet unpredictable traffic demands. Our platforms provide efficient transport at any scale, from compact access to the converged Optical Transport Network (OTN)/DWDM core. They support a wide range of applications and services, including:

- Metro and long-haul transport
- Broadband backhaul
- Data center interconnect
- Multicast video
- Carrier Ethernet
- Wavelength services

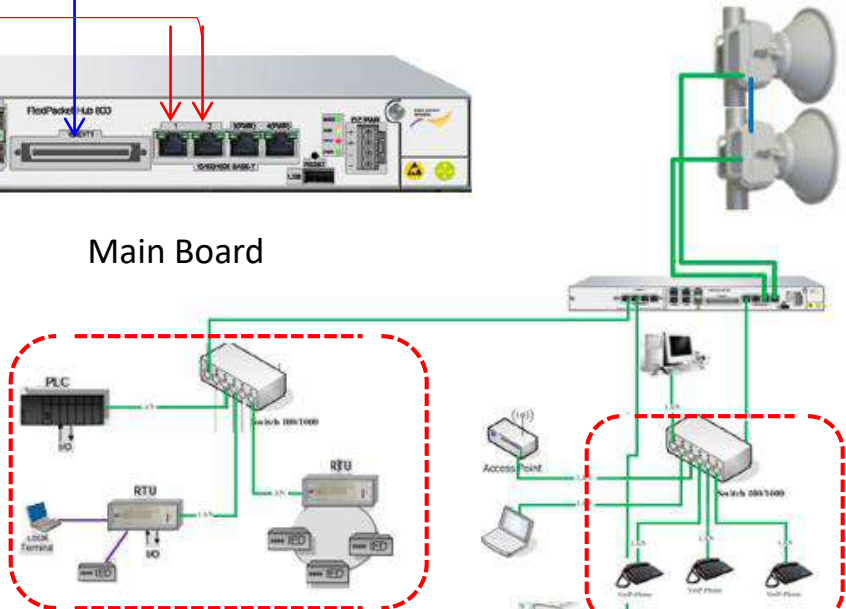


**NOKIA FLEXI PACKET MICROWAVE
RADIO SOLUTIONS**



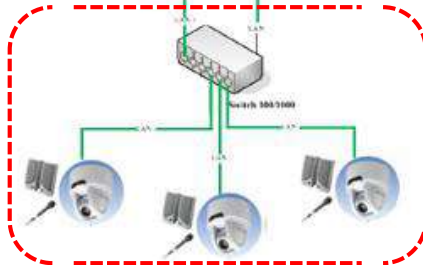
Plug-in Unit

Main Board



SCADA APPLICATION

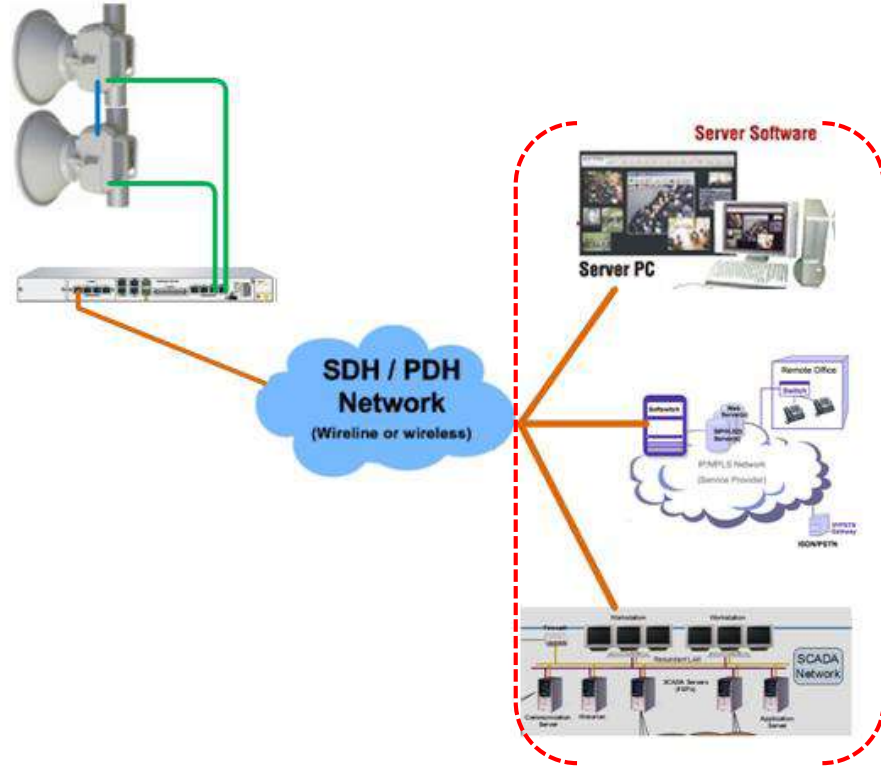
VOIP APPLICATION



CCTV APPLICATION



ETHERNET CONNECTOR ODU-ODU CONNECTOR PS CONNECTOR AGC CONNECTOR GROUND BOLT



SERVERS

Industrial LAN Communication

BIG Networks experience in connectivity for industrial automation enables to optimize communication and collaboration between multiple systems with various processes. We deliver innovative, efficient, and reliable solutions to establish the infrastructure networks with utmost secure and reliability.

MOXA

- Ethernet Media Converter
- Wireless AP/Bridge/Client
- Secure Routers
- Serial Converters
- Protocol Gateways
- Controllers & I/O s

OTS

- Ethernet Media Converter
- Ethernet switches
- Optical Switches
- POE Injectors and Splitter
- POE Media Converters

RUGGEDCOM SOLUTIONS

- Layer 2 switches
- Layer 3 switches and routers
- Media converters and serial servers
- Wireless



Voice Communication (Analogue & IP Telephony)

BIG Networks will establish the error free network on a simple voice-only solution, or a VoIP product that is embedded within a larger unified-communications suite.

Think about which type of solution will best serve your business needs.

Being a system integrator and Telecom expert, BIG has tremendous networking capability in voice communication on both Analog and VoIP.



ANALOGUE

- PABX
- Hotline
- Industrial Telephone

VoIP

- Cisco Unified communication
- VoIP Communication
- Video Conferencing

RADIO

- UHF/VHF Radio
- Ethernet/ E1 radio
- WLAN Radio
- Tetra Radio





Motorola Solutions creates innovative, mission-critical communication solutions and services that help public safety and commercial customers build safer cities and thriving communities.

Motorola Solutions products can be found at work in a variety of industries including law enforcement, fire, emergency medical services, national government security, utilities, mining, energy, manufacturing, hospitality, retail, transportation and logistics, education, and public services.

[Learn More about Motorola Solutions](#)

Products

- **MOTOTRBO Mobile Radios** - ideal for in vehicle use, MOTOTRBO digital mobile radios deliver double the capacity, clear audio and integrated data applications for your mobile workforce.
- **MOTOTRBO Portable Radios** - deliver double the capacity, clear audio, integrated data applications and longer battery life to keep your workforce connected.
- **P25 Portable Radios** - redefine safety in communication with portables designed to deliver the highest level of interoperability for efficient mission critical management.
- **Unlicensed Radios** - ready-to-use and license-free, these radios have a range of up to 10 kilometres (6.5 miles), enabling on-site communications with no call charges – the perfect answer for business and private users who need to stay in touch.



MOTOROLA SOLUTIONS



Products

- **Mobile P25 Radios** - with a wide range of rugged, flexible mobile radio options available, Motorola mobile radios set the standard for advanced technology and real-world reliability, enabling personnel to communicate in any environment.
- **TETRA infrastructure and radios** - Motorola Solutions have taken a leading role in the development of the TETRA Standard. TETRA offers solutions which are secure, reliable and efficient communications customised to meet the needs of different markets.
- **Repeaters** - extend range and overcome signal obstructions to ensure reliable communication between multiple locations or a single site. Features vary from integrated data applications to analogue to digital migration capabilities.





Cambium Networks is a leading global provider of wireless fabric infrastructure for business and residential broadband and Wi-Fi. With an extensive range of wireless portfolio, Cambium products are being used by commercial and government network operators as well as broadband service providers to connect people, places and things. With a single network architecture spanning fixed wireless and Wi-Fi, Cambium Networks enables operators to achieve maximum performance with minimal spectrum. End-to-end cloud management transforms networks into dynamic environments that evolve to meet changing needs with minimal physical human intervention. Cambium Networks empowers a growing ecosystem of partners who design and deliver gigabit wireless solutions that just work.

[Learn More about Cambium Networks](#)

Products

- **cnPilot** - scalable end-to-end wireless for 802.11ac and 802.11n. Meeting Network needs and managing everything in one place. Manage it all, all in one place. Cambium Networks offers secure, scalable, cloud-managed WiFi solutions for homes, small business, and both indoor and outdoor enterprise applications. The 802.11ac and 802.11n access points allow for rapid deployment and easy operation, and one-stop, intelligent remote diagnostics round out a managed
- **cnReach** - cnReach transports process monitoring and control data from the remote sensor back to the operations centre supporting real-time automated decision making and on-going analytics. Covering large geographic areas, hard to reach terrain and challenging spectrum environments, cnReach delivers reliable, secure connectivity to the petrochemical, electric utility, water/wastewater/ storm water and transportation industries.
- **cnMaestro** - Cambium Networks cnMaestro management platform is tailor-made to simplify management of your Cambium network. It is available in the cloud and is deployable on premises, built from the ground up for secure, end-to-end network lifecycle management, inventory management, onboarding devices, daily operations and maintenance.



Cambium Networks





Products

- **Point-to-Point (PTP)** series solutions are deployed worldwide, serving highly critical applications in formidable environments for the world's most demanding users. With best-in-class real-world performance and FIPS 140-2 approved security available for government and military applications.
- **Point-to-Multipoint (PMP)** series wireless networking solutions connect millions of people across the world regardless of distance. With frequency reuse enabled by GPS Synchronization.
- **ePMP™** - ePMP backhaul solutions provide low-latency, interference-tolerant, high-throughput options at very competitive prices. Supporting various channel bandwidths, ePMP suits a wide range of performance needs for different applications.

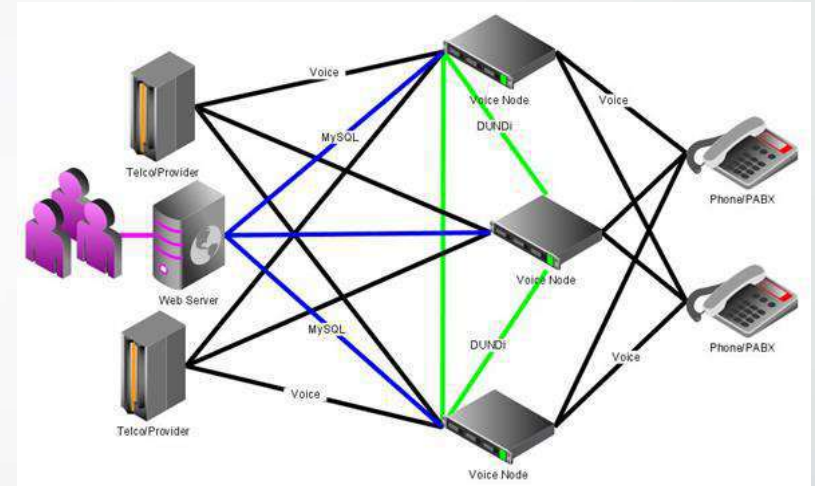


Cambium Networks

IT NETWORK SOLUTIONS



Today's environment requires effective communication methodologies., Each requirement is unique. Our expert team visit your premises to understand your needs and requirements, and to customize your needs and deliver a solution to suit your requirements. . Our solution caters to the requirements in all range from Multi locational corporate to Medium and Small offices



DATA NETWORK

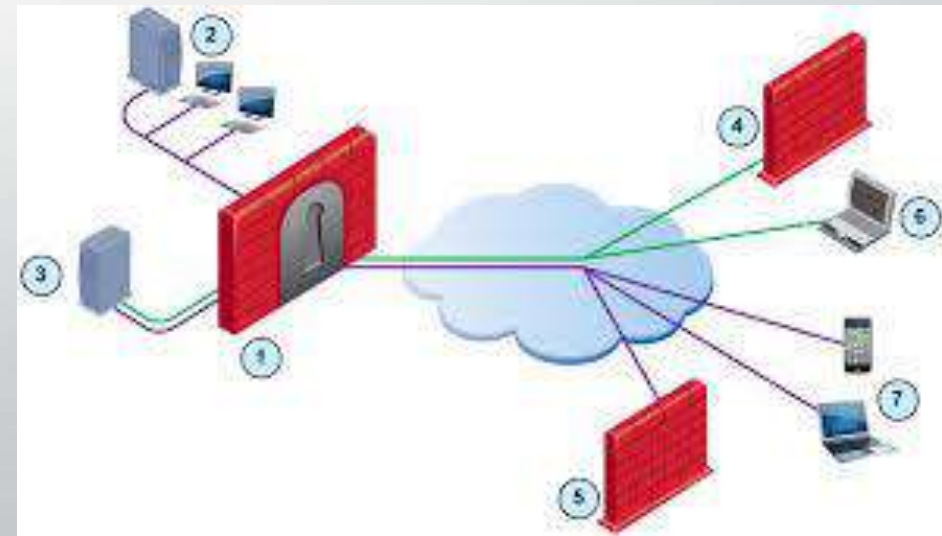
- Data Network infrastructure setup
- VPN and Remote connectivity
- Industrial LAN/ MPLS networking

CYBER SECURITY & FIRE WALL SOLUTIONS

Security threat is the Major challenge which all Banking/ Finance institutions facing today.

Our expert team carefully study Analyze and built the security implementation. Which the customer is free from all threats.

1. Fire wall solution to prevent the Intruder.
2. Multilevel login security
3. Investigate cyber security threats faster with real-time, end-to-end cyber security monitoring. Get set up within minutes.



Network Server

BIG IT solutions will provide complete network infrastructure set up with HPE servers and Storage network equipments To address your High Performance Computing, virtualized, and memory-centric workloads

Hewlett Packard Enterprise is extending the worlds' most secure industry standard servers to include the HPE ProLiant DL385 Gen10 server, utilizing the AMD EPYC 7000 Series processors. This platform has been designed with the security you need and the flexibility you require to accommodate demanding enterprise workloads. With up to 64 cores, up to 32 DIMMs, or 4 TB memory capacity and support for up to 24 NVMe drives, the HPE ProLiant DL385 Gen10 server delivers a low cost virtual machine (VM) with unprecedented security.



CABLING SOLUTIONS

From design and deployment to management and moves, adds and changes; BIG Networks delivers the performance, flexibility and reliability to meet the classfull cabling infrastructure for Data and Voice.



Outside Plant – OSP

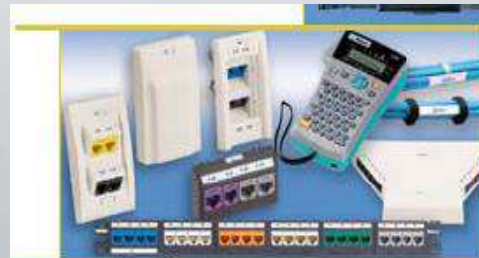
- Cabling to suit all nature of projects for Oil & Gas and Qtel/ Oreedoo standards requirements for fiber and copper Networks.
- Fiber Splicing and OTDR Testing Solution
- Fiber optic cable
- Fiber panels and Cassettes
- Fiber tools, kit and consumables
- Outside enclosures

Structured Cabling

- Complete connectivity solution
- Installation
- Designing
- Cable pulling
- Splicing & Termination
- Testing & Commissioning
- Moves/adds/changes
- Troubleshooting

Racks & Cabinets

- Server Cabinet
- Network Cabinet
- Server and Network cabinet accessories
- Wall Mount enclosure
- Outdoor enclosure
- Racks
- Power Distribution (UPS/ PDU)



CABLING SOLUTIONS

From design and deployment to management and moves, adds and changes; BIG Networks delivers the performance, flexibility and reliability to meet the classfull cabling infrastructure for Data and Voice.



Outside Plant – OSP

- Cabling to suit all nature of projects for Oil & Gas and Qtel/ Oreedoo standards requirements for fiber and copper Networks.
- Fiber Splicing and OTDR Testing Solution
- Fiber optic cable
- Fiber panels and Cassettes
- Fiber tools, kit and consumables
- Outside enclosures

Structured Cabling

- Complete connectivity solution
- Installation
- Designing
- Cable pulling
- Splicing & Termination
- Testing & Commissioning
- Moves/adds/changes
- Troubleshooting

Racks & Cabinets

- Server Cabinet
- Network Cabinet
- Server and Network cabinet accessories
- Wall Mount enclosure
- Outdoor enclosure
- Racks
- Power Distribution (UPS/ PDU)



ELV SYSTEMS



What we Offer

SECURITY SYSTEM

- IP CCTV System
- Video Analytics
- Access Control System
- Audio & Video Intercom System
- Intrusion Detection System
- Barriers / Bollards / Turnstiles / Blockers
- Parking Management & Guidance
- Disabled Toilet Alarm Systems
- PA/GA System

AUDIO/VISUAL SYSTEM

- Digital Signage & Video Walls Systems
- Audio/Video Conferencing System

OTHER SYSTEMS

- Nurse Call System
- SMATV/IPTV System



Security System- IP CCTV System

BIG designs and installs complete CCTV systems including fully equipped control rooms as well as other security surveillance solutions. BIG has successfully implemented tens of large and small CCTV from Various vendors.

BIG deals in world-renowned brand of CCTV product such as PELCO and HoneyWell Security Solutions. As we can provide other brands subject the Budget and Application to End-User.

CCTV Products

- Vandal Resistant Cameras
- Ex-Proof Cameras
- Weather Proof Cameras
- Thermal cameras for long distance applications
- Speed Dome Cameras
- Digital Video Recorders
- Automatic Number Plate or License Plate Recognition System
- IP Encoders

CCTV Accessories

- CCTV Poles
- CCTV Junction Boxes and Winches
- Wiper and Washer for Automatic cleaning



Typical Weather proof CCTV Installation with IR Light



Security System- Video Analytics

Video analytics solutions can capture and identify various types of content and events, including motion detection, facial recognition, crowd and vehicle counting, heatmap and dwell time in shopping aisles, traffic and queue detection, and more

Integrating analytics tools into your surveillance system can make it more intelligent and effective.

Video analytics played major role in the following:

1. At the parking- License Plate Recognition (LPR)
2. At the gates- Queue Management
3. Security check & ticket scanning- Connected devices
4. Protecting Boundaries- Intrusion Detection
5. Crowd Control- People Counting



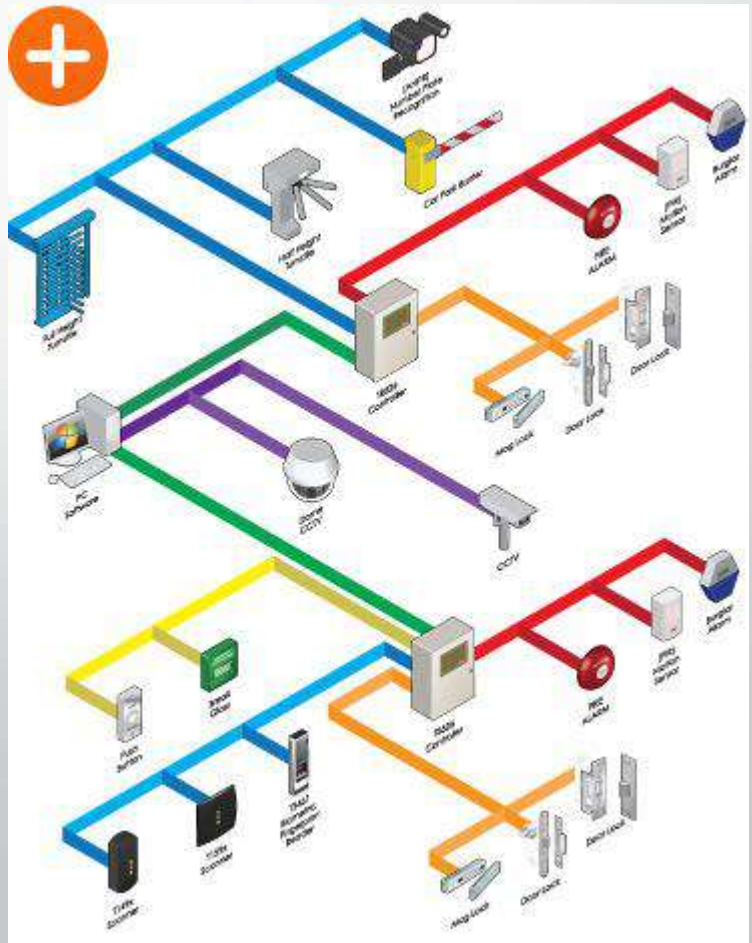
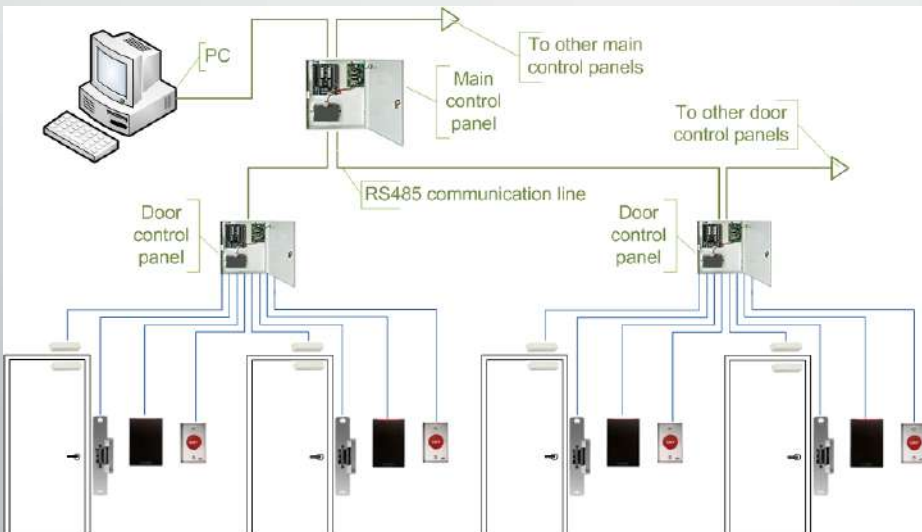
ELV SYSTEMS



Security System- Access Control System

BIG designs and implements various Access Control systems based on solutions from multiple vendors. We offer systems ranging from standalone card printers and readers up to complicated networked systems consisting of tens of card readers and various types of biometric recognition and identification devices, door controllers and other types of readers from vendors such as Bosch, Honeywell, GEM, etc.

As a solution provider and integrator we take great responsibility in design and integration of Access Control Systems (ACS) with CCTV, Barrier, BMS etc

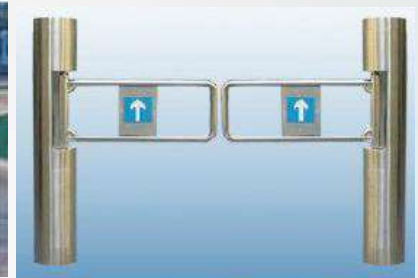


ELV SYSTEMS



Security System- Barriers / Bollards / Turnstiles / Blockers

At Big Networks in association with CEDAMATIC automation systems are “state-of-art” products for Harsh Weather conditions and are powder coated to avoid corrosion and rusting. They combine reliable for everyday use with safety, elegance and convenience. These products are designed to be long lasting. They are the result of broad-based technology Our customized solutions to match all industries Five star hotels to parking for High rise buildings.



Options to Access Control – Subject to Project and End-User requirements:

- Boom Barriers
- Raising Bollards
- Road Blockers for Embassies or Hotels
- Vehicle Scanning System
- Full Height or Waist Height Turnstiles

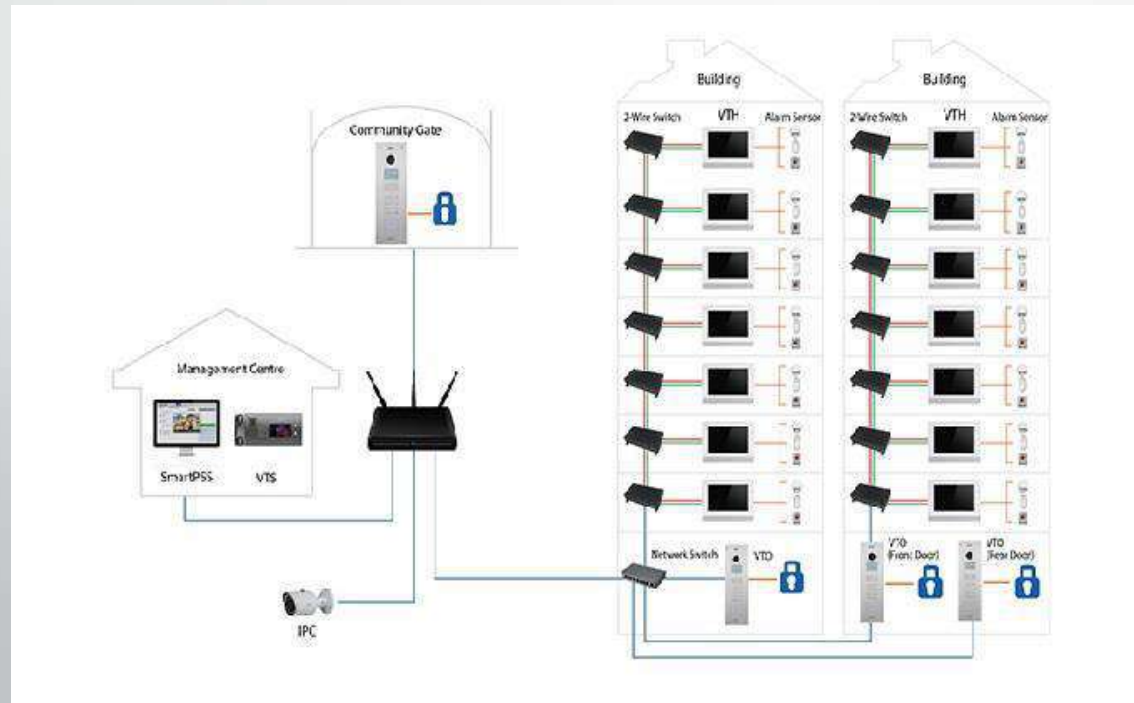


ELV SYSTEMS

Security System- Audio & Video Intercom System

BIG Networks will video intercom solutions for visitor access control in villas, multistoried residential & commercial buildings, and ministries, hospitals, banks, educational institutions and factories.

Being a system integrator and Telecom expert, BIG has tremendous networking capability in voice communication on both Analog and VoIP.



Security System- Parking Management & Guidance System

BIG will help you improve your customers parking experience, while optimizing your parking occupancy from individual space detection sensors, camera based monitoring technology and fully customizable LED and metric signage systems to real time monitoring software and internet based parking apps.

We understand that every parking garage is unique

We can offer the best solution:

1. Accurate and reliable guidance
2. License plate recognition
3. Car locating
4. Integrated video surveillance
5. Reservation functionalities
6. Custom signage (Matrix and Profile)

New technologies have made parking quicker, easier and more customer-friendly.



Security System- Intrusion Detection System

With ever increasing threat levels it is important that organization's properly secure their assets. This starts at the perimeter of their sites where there has never been a more important time to deploy robust, reliable and secure detection strategies to mitigate operational risk.

BIG solutions provide both covert buried or along the pipe line and fence or wall mounted detection capabilities from various vendors. With fully scalable systems for sites less than 5km to more than 100km BIG has the solution for you.

Intrusion Detection Solution

- Fence Detection System
- Buried Cable detection system
- Microwave Sensors
- Infrared Sensors

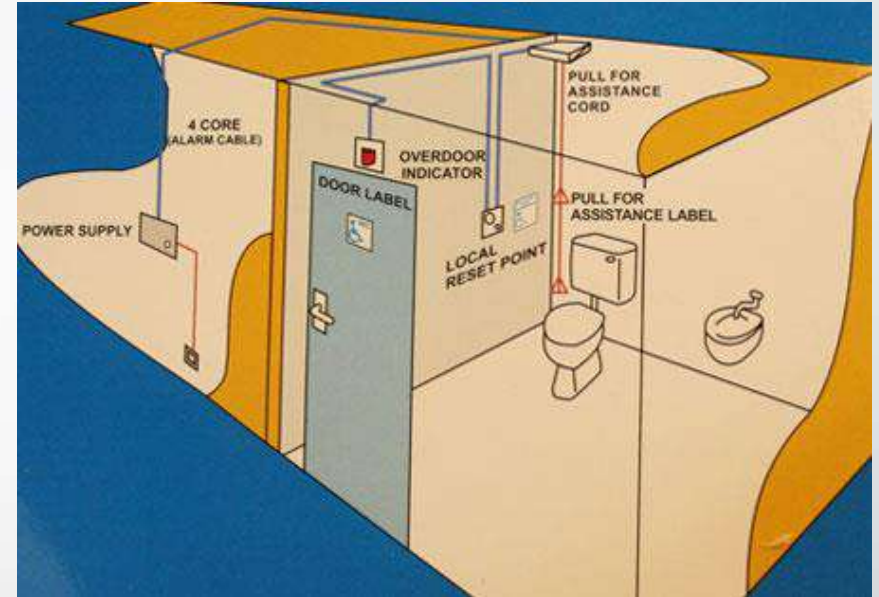


Security System- Disable Toilet Alarm System

Disabled toilet alarms are essential to allow disabled persons to alert staff members and managers that assistance is required in the toilet cubicle or dedicated disabled bathroom.

This disabled toilet alarm system, where style has met function in design, can be effectively used in a many applications in disabled restrooms in restaurants through to hospitals.

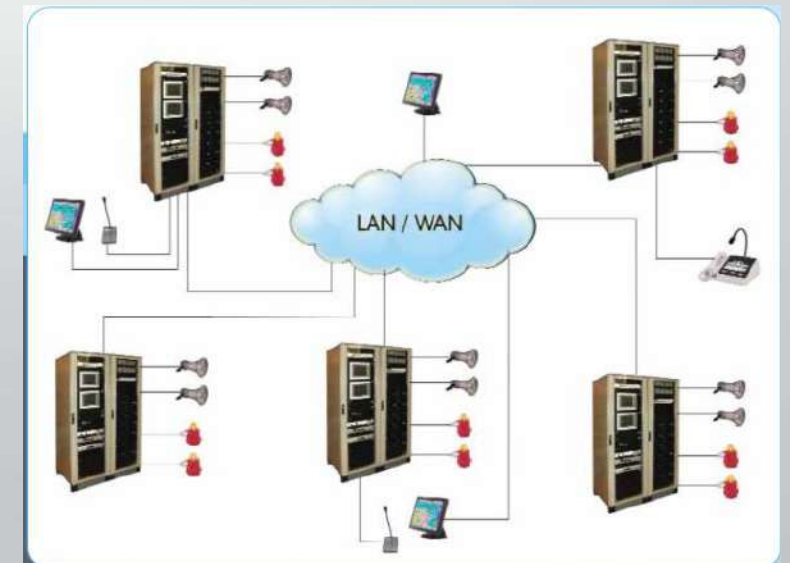
BIG meets and exceeds the requirements in personnel safety and ensure the reliability of the system.



Safety and Evacuation- PAGA System

Whether it is industrial, commercial or residential sound system, BIG has an experience and the expertise to implement it. With wide range of Network Based Solutions, our systems can offer sound reinforcement in small restaurants to large factories, from residential buildings to malls.

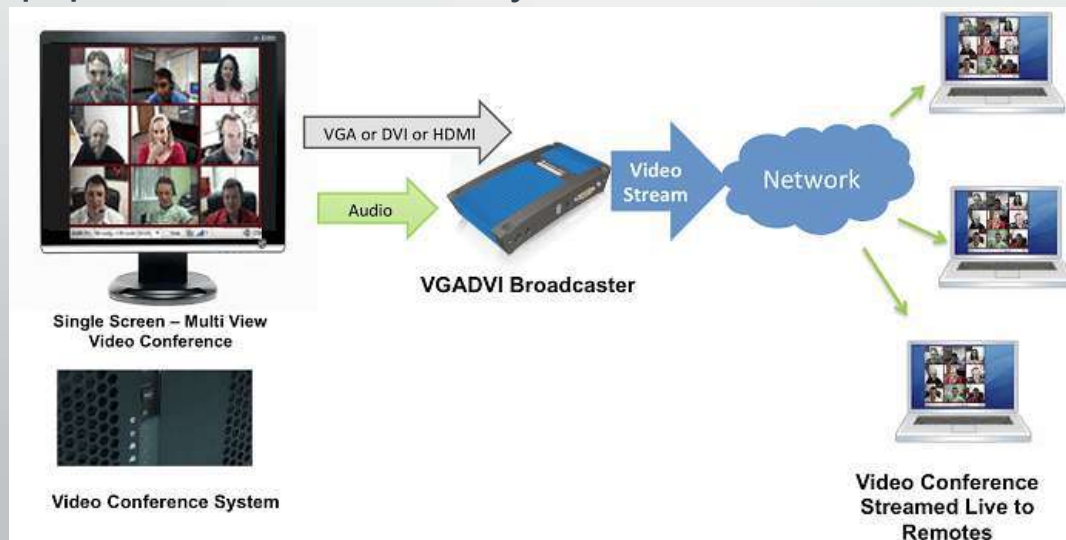
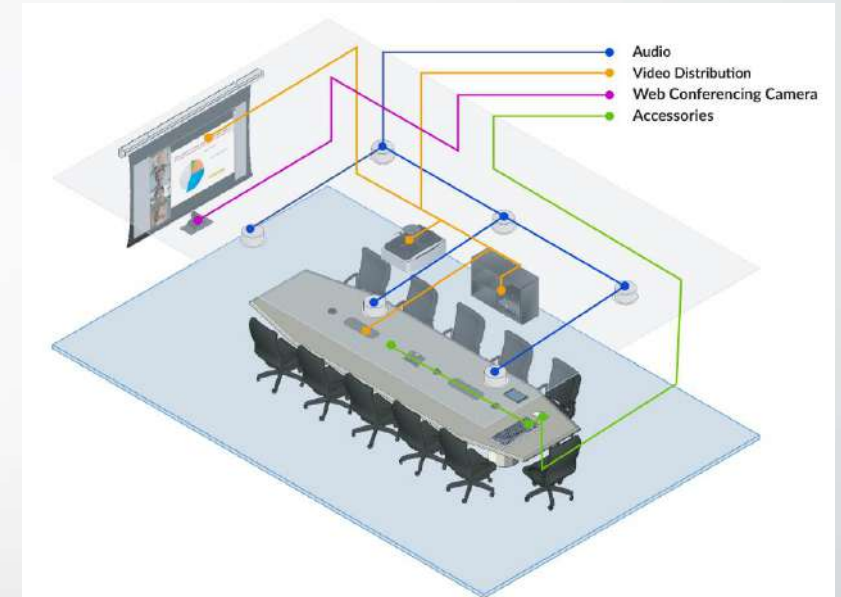
BIG has designed and implemented PA (Public Announcement) and PAGA (Public Alert and General Alarm) systems for Oil and Gas sector, government agencies and private companies. Our systems have been based on leading vendors such as Bosch, TOA, and Federal Signal.



Audio / Visual System

We plan, design and implement solutions matching client needs for optimized performance of Audio Visual System. Our solutions range from a pull-down Screen, Projector to a fully equipped Command Centre for Emergency response applications.

BIG provides a complete range of branded Audio Visual and Automation products including Audio and Video sources, processing, Routing and Destination Devices, Conferencing Equipment and Control Systems.



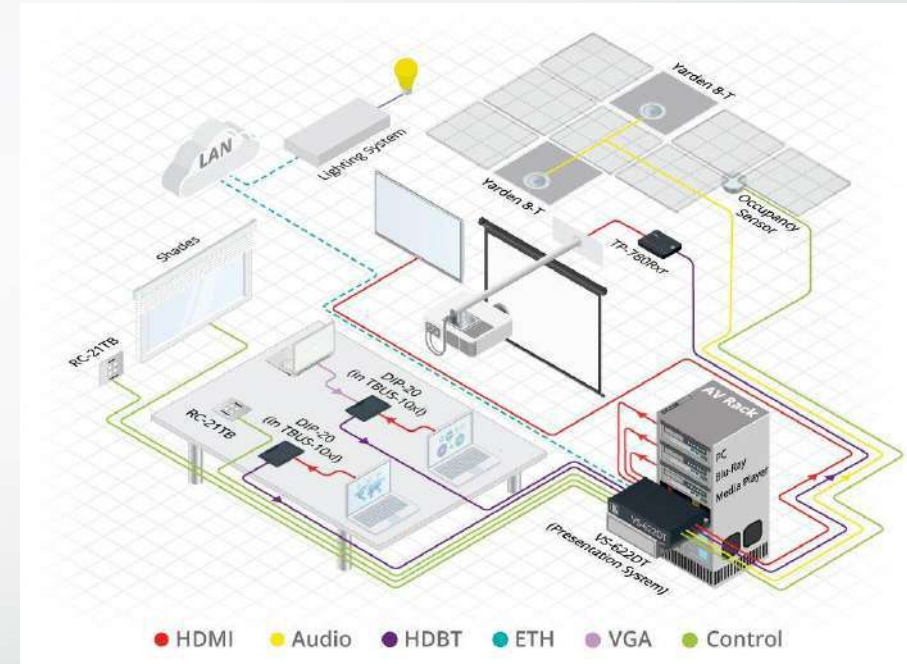
ELV SYSTEM

Audio / Visual System- Audio / Video Conferencing system

The Audio-Visual Solutions in Boardrooms and Conference rooms must be professionally designed and optimized as per your organization's needs, so that your staff, instructors and employees feel comfortable operating these technologies.

We aspire to be your preferred partner for innovative technology solutions.

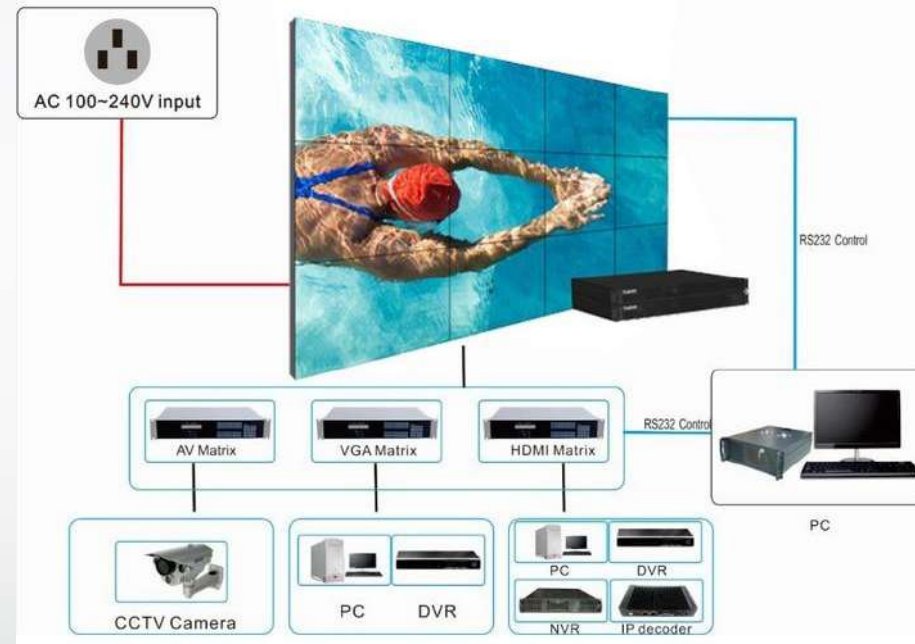
BIG ensures enterprises to create more usable, digitally-enabled meeting spaces with superior boardrooms & conference rooms av solutions.



Audio / Visual System- Digital Signage & Video Walls

The digital signage is a large interactive board used to advertise sales, brands, events, awareness and dynamically present any visual information on a video wall using multiple screens to create a virtual wall of information, an ideal concept, engaging audience with a powerful digital display.

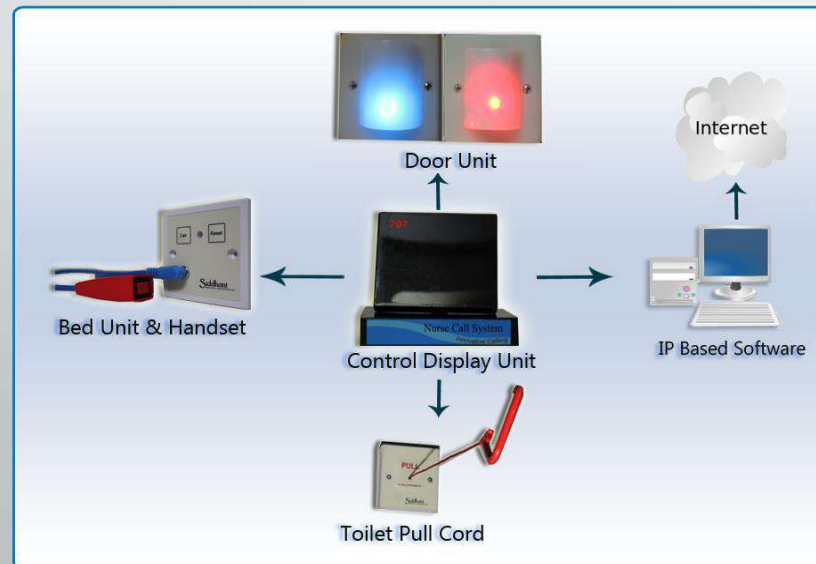
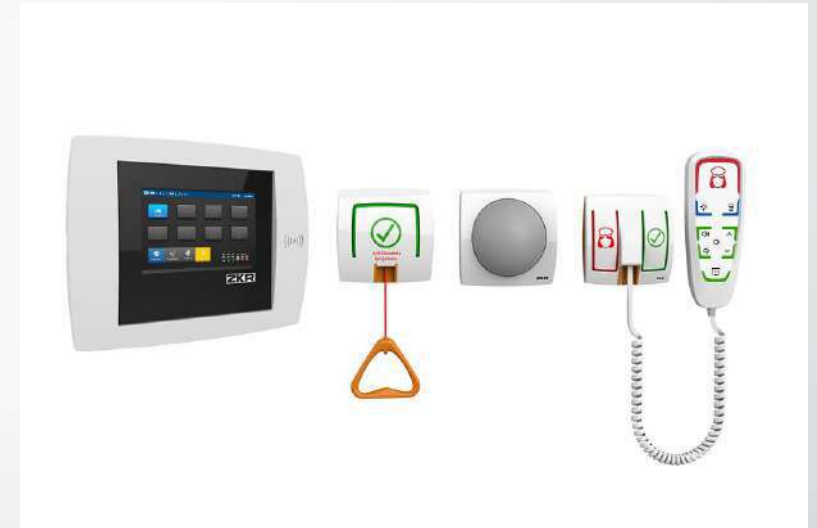
BIG, with extensive experience incorporating into high-end kiosks offers enclosures digital signage system, self-service terminals, LCD panels and touch screens monitors



Nurse call system

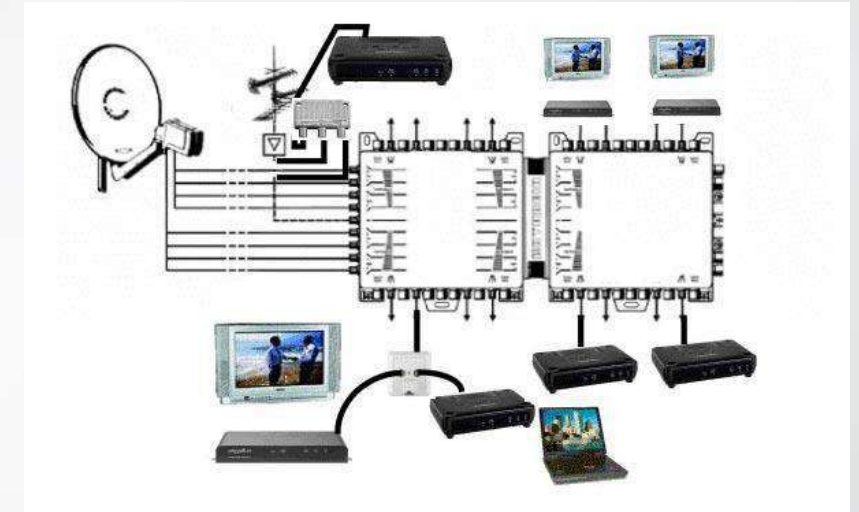
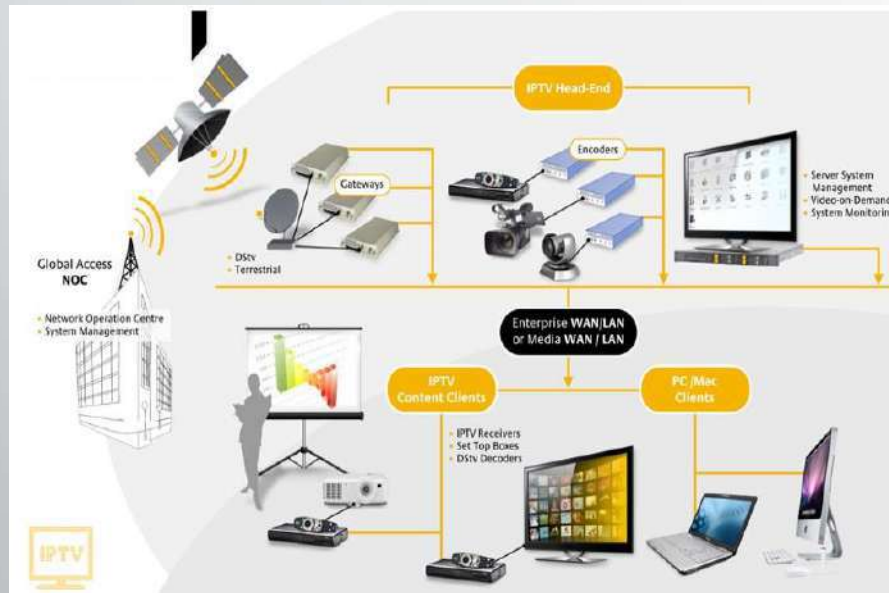
We can offer the best Nurse Calling Systems which provides a perfect solution to the hospitals & nursing homes.

Patients' care is undoubtedly the main aim of all hospitals and Nursing Homes. Hence there is a need to provide one dedicated line of communication to every patient so that the patient can draw attention of a nurse from his bed whenever required.



Multimedia System - SMATV & IPTV system

SMATV stands for Satellite Master Antenna Television, and refers to a system that uses multiple satellite to broadcast television and sound signals to create a single integrated cable signal for distribution to households or offices within a building or multiple buildings, especially to Hotels, Apartments, Offices etc.



IPTV System is defined as secure & reliable delivery to subscribers of entertainment video and related services. These services may include, for example, Live TV, Video On Demand (VOD) and Interactive TV (iTV). These services are delivered across an IP network to transport the audio, video & control signals.

BIG can offer the best SET UP for SMATV /IPTV system from various vendors, which provides a perfect solution to the households, Hotels, Apartments, etc.

PARTNERS



Honeywell
THE POWER OF **CONNECTED**

CEDAMATIC
Automation for Doors & Gates

OFO
العمانية للألياف البصرية
Oman Fiber Optic

GEM[®]
GIANNI INDUSTRIES, INC.

SIEMENS

 **PANDUIT**


CISCO


Hewlett Packard
Enterprise

 **FEDERAL**
SIGNAL
CORPORATION

BELDEN
SENDING ALL THE RIGHT SIGNALS


RITTAL

PELCO[®]

Entel


MOTOROLA
SOLUTIONS


Cellcomm

HCS
HES Cabling Systems
Connecting Networks™

OUR CUSTOMERS



OUR CUSTOMERS



ANNUAL MAINTENANCE CONTRACTS



BIG Trading & Contracting recommends proactive maintenance, after the 12 months defect liability period. We can determine maintenance requirements based on your system's complexity, equipment components, frequency of use, available personnel support and more.

Big Trad & Contg offers a comprehensive "Annual Maintenance contract" choose from maintenance and service options that vary from on-call support to full-time on-site support. Big Trad & Contg service team is comprised of highly trained and experienced personnel. Our technicians are certified on numerous systems and components and are proficient in the servicing control systems and other complex equipment. E

Every AMC service plans offers preventive maintenance visits that will help assure your system continues to work dependably, now and in the future.



OUR STRENGTHS - BIG ADVANTAGE

- ▶ 100% Local presence in the country, there is no dependency on foreign Manpower
- ▶ Professional support
- ▶ Systematic Approach in implementation of Projects.
- ▶ Extensive knowledge and understanding of QP projects, quality requirements and systems used.
- ▶ Well versed with QP-Dukhan Area and Geographical locations. We have executed multiple projects with different Contractors.

